



Information and Knowledge Base - Ireland

Dr. Eibhlín Doyle & Dr. Wayne Cox
Exploration & Mining Division, DCENR.



Who is EMD?

- Line Division of DCENR
- Small Unit (4 Geological Staff supported by administrative staff)
- Charged with:
 - Regulating the exploration and mining sectors
 - Development of minerals (and geothermal) policy and legislation.
 - Rehabilitation of certain historic mine sites
 - Promoting Ireland internationally as a favourable location to carry out mineral exploration



What Geological Information is Held by EMD?

- Information submitted by exploration companies.
- Publicly available information includes:
 - Thousands of company exploration reports
 - Regional airborne geophysics datasets (>30% of Ireland)
 - Various geospatial datasets (e.g. boreholes, PL Area boundaries, mineral deposits, historic mines, etc.)
 - Administrative data on Prospecting Licence Areas
- All data is FREE and available in digital format.



Ireland's Regulatory System for Mineral Exploration

- Must obtain a Prospecting Licence (PL) from State.
- A PL gives the holder the right to explore for certain minerals in a specified Prospecting Licence Area (approx 35km²).
- PL is initially issued for six years.
- Licensees must submit detailed work reports (“company exploration reports”) every two years.



Exploration Company Reports

- Work reports must contain details of **ALL** work carried out by the licensee and **ALL** results arising from their prospecting activities.
- Must be submitted in appropriate digital format (e.g. PDF, Word, shp files, excel, SEG Y format)
- A typical work report includes results of geological mapping, geochemical exploration, diamond drilling (logs and assays) & ground geophysics.
- Remain confidential for a period of 6 years or until the licence is surrendered (whatever is sooner).



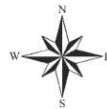
State Mining and Prospecting Areas

1st November 2013

Department of Communications, Energy
and Natural Resources
Exploration and Mining Division

The area boundaries on this map are approximate.
Details are available from the Exploration and Mining Division.

0 25 50 75 100
1:750,000
KM



Navan Mine



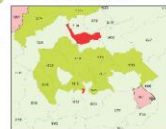
1:250,000 0 5 10
KM

Lisheen and Galmoy Mines



1:250,000 0 5 10
KM

Leinster Coalfield



1:250,000 0 5 10
KM

Available Ground

- Competition Area
- Open Area - No Incentives
- Open Area - Incentives

Unavailable Ground**

- Prospecting Licence Held
- State Mining Facility
- License Offered / Unavailable
- Competition Closed
- National Parks and other Excluded Areas

Geography

- Lakes
- Urban Areas
- Large Towns
- Prospecting Licence Boundary
- County Boundary

Major Licence Holders

- Boliden Tees Mines Ltd. (89)
- Tark Island Ltd. (82)
- Perf. Seaboard Resources Ltd. (70)
- Evis Resources Ltd. (50)
- Lundin Mining Exploration Ltd. (45)
- Exploration & Discovery Ltd. (34)
- Marine Gold Inc. (34)
- Gorey Gold & Natural Resources Plc. (32)
- Adventus Exploration Ltd. (31)
- MC Exploration Ltd. (23)
- Gold Rule Minerals Ltd. (22)
- Midas Mineral Resources Ltd. (21)
- Oxal Selection Trust Ltd. (16)
- Metallum Exploration Ltd. (15)
- Unicom Mineral Resources Ltd. (15)
- Hendrik Resource (Ireland) Ltd. (14)
- Connemara Mining Co. Ltd. (13)
- Hibernian Resources Ltd. (12)
- Xarata Zinc Ireland Ltd. (10)

Current Prospecting Licences 647
Current State Mining Licences 19
Current State Mining Leases 12

**Unavailable ground may be available for application for certain minerals. Please see the Competition Booklet for further information.

2013

- >650 current PLs
- 3 Mines operating and one in closure mode
- 4 other (coal, fireclay, marble)

Fraser Institute Survey
Ranked 6th overall out of 92 jurisdictions



P.L. Area Map (Detail)





EMD's Publicly Available Digital Datasets (1)

- 1. Exploration Company Reports & Administrative Data on P.L. Areas**
2. Airborne Geophysical Data
3. Web Mapping Services
4. Geological Survey of Ireland website



Roinn Cumarsáide, Fuinnimh agus Acmhainní Nádurtha
Department of Communications, Energy and Natural Resources

All

as gaeilge

	Broadcasting Radio, Television & the provision of quality broadcasting services.
	Energy Security & reliability of energy supply & to develop energy conservation
	Communications Electronic communications, radio spectrum & postal services and regulation.
	Natural Resources Petroleum Affairs, Exploration, Mining, Geology & Inland Fisheries



[Minister Pat Rabbitte](#)



[Minister of State Fergus O'Dowd](#)

Quicklinks

Minister's Brief 2011	Legislation
Croke Park Agreement	Minister's Office
Management Committee	Minister of State
Spatial Data	Publications
Press Room	Corrib Gas Field Development
Re-use of Information	Regulation of Offshore Natural Gas Storage
Corporate Units	Exemplar Network
Consultation on Statement of Strategy 2011-2014	

Welcome

The **Department of Communications, Energy and Natural Resources** has responsibility for the Telecommunications, Broadcasting and Energy sectors. It regulates, protects and develops the Natural Resources of Ireland.

Latest News

- Minister Rabbitte inspects cable laying works at sea in large energy interconnector project**
27/10/2011 11:24:00
Minister Rabbitte visits Malahide Marina to inspect cable laying for Ireland's first electricity interconnector to Great...
- Minister Rabbitte welcomes EU Commission Telecoms specialists to Dublin**
24/10/2011 12:28:05
Minister Rabbitte welcomes EU Commission Telecoms specialists to Dublin
- Learning Waves Conference Address**
Aviva Stadium Dublin
Independent Radio: A Strong Voice. Minister Rabbitte also outlines the challenges to the media in Ireland today
- EirGrid Group Annual Customer Conference**
20/10/2011 09:14:02
EirGrid Group Annual Customer Conference Opening Speech
- Minister Rabbitte welcomes EU Commission proposals for the Development of European Energy and Communications Networks**
19/10/2011 13:55:27
Minister Rabbitte welcomes EU Commission proposals for the Development of European Energy & Communications Networks

1 2 3 4 5 6 7 8 9 10 ...

[More News](#) »

[RSS](#)

RBS
Rural Broadband Scheme

BETTER ENERGY
The National Upgrade Programme
Better Energy

http://www.dcenr.gov.ie/Spatial+Data/

DCENR Spatial Data - Department of Communications, Energy and Natural Resources - Windows Internet Explorer provided by DCENR

http://www.dcenr.gov.ie/Spatial+Data/

File Edit View Favorites Tools Help

Favorites Free Hotmail

DCENR Spatial Data - Department of Communications,...

E-Services | Home | Login | Contact | Request Braille | Site Map | About Us

Roinn Cumarsáide, Fuinnimh agus Acmheinní Náúúrtha
Department of Communications, Energy and Natural Resources

as gaeilge

BROADCASTING ENERGY COMMUNICATIONS NATURAL RESOURCES

Home > DCENR Spatial Data

DCENR Spatial Data

Petroleum Affairs

Exploration & Mining


Geological Survey of Ireland

Recently Updated Pages

Disclaimer

DCENR Metadata



Terms and Conditions



Welcome to DCENR Spatial Data pages. This is an initiative to present all DCENR spatial data in a usable fashion, to enhance public access to information about the Government and DCENR functions. The business datasets are presented in simple online GIS form via a browser or as a data download. In some cases a more advanced browser is available with additional tools and functionality. For general usage terms see the disclaimer below. WMS and WFS Services are also being made available for selected datasets, please see links and guides below. We welcome suggestions or comments regarding any of the services or datasets presented in this section. Enhanced functionality and content will be added continuously so please bookmark this page and revisit.

NOTE: GIS service url's and content have changed as of 09/04/2009. If you have bookmarked any links or sites previously you will need to recreate these. Consumption of WMS or WFS services will also have been effected, again please refresh all links in your applications. Please report any omissions or service failures.

Useful Industry Data Links



Disclaimer

By using data obtained from these pages you are agreeing to abide by the following [Disclaimer](#) which defines the nature of the data available and the terms of its usage. Please read this text in full.

What's New on DCENR Spatial Pages 2009

GSI and EMD have jointly released access to their Exploration Company Report repositories via a MapViewer



OpenFile PLAREA number Screen

EMD and GSI Exploration Company Reports

The Exploration and Mining Division (EMD) and the Geological Survey of Ireland (GSI) hold Exploration Company Reports (GSI Open File Records) relating to many current and historic Prospecting Licence (PL) Areas. Search for a PL Area below and choose to view a map or a Company Report.

By using the data obtained from these pages you are agreeing to abide by the following [Disclaimer](#) which outlines the copyright and general terms of use of the data. Please read this text in full.

Please enter valid PL Area(s) below. You may enter multiple PL Areas separated by a comma. The 'Map' link when clicked will render the selected PL Area(s) in a GIS (IMF) Viewer. The 'Company Reports' link when clicked will render the selected PL Area(s) Exploration Company Reports page.

PL Area:

[Map](#)

[Company Reports](#)

Enter into the text box, your PL Area number of interest to access relevant company reports and administrative data

Exploration Company Reports Interface: Gateway to EMD and GSI data

Exploration Company Reports - Windows Internet Explorer provided by DCENR

http://gis.dcenr.gov.ie/imf/sites/ExplorationCompanyReports/explorationCompanyReports.jsp?plAreas=2103




 Department of Communications, Energy and Natural Resources
Roinn Cumarsáide, Fuinnimh agus Acmhainní Nádurtha

Exploration Company Reports

The Exploration and Mining Division (EMD) and the Geological Survey of Ireland (GSI) hold Exploration Company Reports (GSI Open File Records) relating to many current and historic Prospecting Licence Areas. Use the links below to access available, non-confidential documents from their respective systems.


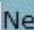
By using data obtained from these pages you are agreeing to abide by the following [Disclaimer](#) which outlines the copyright and general terms of use of the data. Please read this text in full.

PL Area Selected : 2103

PL Area	Document Link to Exploration and Mining Division	Document Link to Geological Survey of Ireland
2103 (Selected)		
1282 (Historic)	No Data Found	

Internet 100%

EMD: Listing of Accessible Exploration Company Reports for PL Area 2103

<div>  Next 20 1 to 15 of 15  </div>				
Report Title	Report Type	Period, Report Size, Notes	Organisation	Public Availability
Surrender Exploration Report for PL2103 "Teck Cominco Ireland Ltd." for the period 26/03/2007 to 25/03/2009	Exploration Report - Surrender Report		Teck Cominco Ireland Ltd.	Public Document
Renewal Report for PL2103 to cover the 2000-2002 period	Exploration Report - Renewal Report	Exploration From: 2000 To: 2002 FileSize:0.103MB	CSA	Public Document
Renewal Report for PL2103 to cover the 1999-2000 period	Exploration Report - Renewal Report	Exploration From: 1999 To: 2000 FileSize:1.4MB	Rio Algom	Public Document
Renewal Report for PL2103 to cover the two year period 1997-1999	Exploration Report - Renewal Report	Exploration From: 1997 To: 1999 FileSize:1.4MB	CSA	Public Document
Renewal report for PL2103 (County Roscommon) for the period 1995-97	Exploration Report - Renewal Report	Exploration From: 1995 To: 1997 FileSize:2.4MB	CSA	Public Document
Summary block report for the Ballinasloe Block (PL2103, PL2105, PL3459, PL3460 and PL3474) for the period 1995-97	Exploration Report - Renewal Report	Exploration From: 1995 To: 1997 FileSize:2.4MB	CSA	Public Document
Review Of Ballinasloe Block geophysics for PL2091, PL3474, PL3459, PL3460 and PL2103 for the period from December 1994 to February 1995	Exploration Report - Geophysics Report	Exploration From: 1994 To: 1995 FileSize:12.9MB	CSA	Public Document
Renewal report for PL2103, County Roscommon for the one year period ending May 1995	Exploration Report - Renewal Report	Exploration From: 1994 To: 1995 FileSize:2.5MB	CSA	Public Document
Renewal report for Ballinasloe Block Licences PL2103, PL3459 and PL3460 for the period 1993-1994	Exploration Report - Renewal Report	Exploration From: 1993 To: 1994 FileSize: 12MB	CSA	Public Document
Renewal report for Ballinasloe Block Licences PL2103, PL3459 and PL3460 for the period 1992-1993	Exploration Report - Renewal Report	Exploration From: 1992 To: 1993 FileSize:10.6MB	CSA	Public Document
Renewal Report for Ballinasloe Block Licences PL2103, PL3459 and PL3460 for the period 1990-1992	Exploration Report - Renewal Report	Exploration From: 1990 To: 1992 FileSize:6MB	CSA	Public Document
Reef and Supra-Reef Stratigraphy in the Ballinasloe Area, PL2103, PL3459 and PL3460, County Galway (Consultants Report by M Philcox)	Exploration Report - Other Report	Exploration From: 1988 To: 1990 FileSize:1.9MB	Mike Philcox (Consultant)	Public Document
Renewal Report on PL1046R County Roscommon for year ending 25th June 1985, (and PL2103, PL2104, PL2105, Co Roscommon for the year ending 2nd December 1985)	Exploration Report - Renewal Report	Exploration From: 1984 To: 1985 FileSize:7.1MB	Westland	Public Document
Renewal Report on PL1046R County Roscommon for year ending 25-6-84, (and PL2103, PL2104, PL2105, Co Roscommon for the two year period ending 2-12-1984)	Exploration Report - Renewal Report	Exploration From: 1983 To: 1984 FileSize: 24MB	Westland	Public Document
Renewal Report on PL1046R, County Roscommon for the year ending 25-6-1982 (and for PL2103, PL2104, PL2105 County	Exploration Report - Renewal Report	Exploration From: 1980 To: 1981 FileSize:6.6MB	Irish Base Metals	Public Document

Administrative Data on PL Areas: Past & Present Licensees

http://gis.dcenr.gov.ie/internetPLArea/servlet/internet/DCMNRInternetMAPSPLAreaLicencesHideTown - Windows Internet Explorer pro

http://gis.dcenr.gov.ie/internetPLArea/servlet/internet/DCMNRInternetMAPSPLAreaLicencesHideTownlands

PL Area Search **Licences** History Documents Constraints

▼ **Prospecting Licence Area Number: 2103**

County: Roscommon	Barony:
Area (sq. km): 41.68	Issue Date:
Expiry Date:	Exploration Data: 32 Document(s)
Geological Setting: Lower and Middle Carboniferous, Waulsortian "Reef"	Status: Held for certain minerals
Townlands: Show	Map: Map

Licences

Below is the list of current Prospecting Licences associated with the selected PL Area.

Licence	Customer	Minerals	Licence Start Date	Licence End Date
255100843	IMC Exploration Limited	▶ Base Metals	18-05-2011	17-05-2017
133780086	Teck Ireland Limited	▶ Base Metals	26-03-2007	20-04-2009
2832836	Ivernia West Plc.		03-05-1988	09-05-2003
2832814	Irish Base Metals Ltd.		03-12-1980	21-08-1986
2832790	Vestor Explorations Ltd.		16-05-1973	22-06-1979

[PL Area Search](#) | [Licences](#) | [History](#) | [Documents](#) | [Constraints](#) |

Copyright © 2010 by Department of Communications, Energy and Natural Resources. All rights reserved.
[About Internet MAPS Release Unknown](#)

Administrative Data on PL Areas: Environmental Information

http://gis.dcenr.gov.ie/internetPLArea/servlet/internet/DCMNRInternetMAPSPLAreaLicencesHideTown - Windows Internet Explorer pro


http://gis.dcenr.gov.ie/internetPLArea/servlet/internet/DCMNRInternetMAPSPLAreaLicencesHideTownlands

PL Area Search | Licences | History | Documents | **Constraints**

Prospecting Licence Area Number: 2103

County: Roscommon	Barony:
Area (sq. km): 41.68	Issue Date:
Expiry Date:	Exploration Data: 32 Document(s)
Geological Setting: Lower and Middle Carboniferous, Waulsortian "Reef"	Status: Held for certain minerals
Townlands: Show	Map: Map

Constraints

 The list below contains any Environmental Constraints which may affect prospecting activities in this PL Area. All constraints should be referred to responsible Agency. You can view the environmental constraints by clicking on the 'View Environmental Constraints' button below.

[View Environmental Constraints](#)

< Next 20 1 to 20 of 40 [Next](#) >

Name	Theme
000222 - Suck River Callows NHA	National Heritage Area
Pipeline Under Construction	Utility Line
000222 - Suck River Callows NHA	National Heritage Area
RO06188	Historic Monument Location
RO06644	Historic Monument Location
RO05884	Historic Monument Location
RO05876	Historic Monument Location
RO05878	Historic Monument Location
RO05880	Historic Monument Location
RO05862	Historic Monument Location
RO05867	Historic Monument Location
RO06762	Historic Monument Location
RO05854	Historic Monument Location
RO05858	Historic Monument Location
RO05861	Historic Monument Location
RO05857	Historic Monument Location
RO05834	Historic Monument Location
RO05837	Historic Monument Location
RO05838	Historic Monument Location

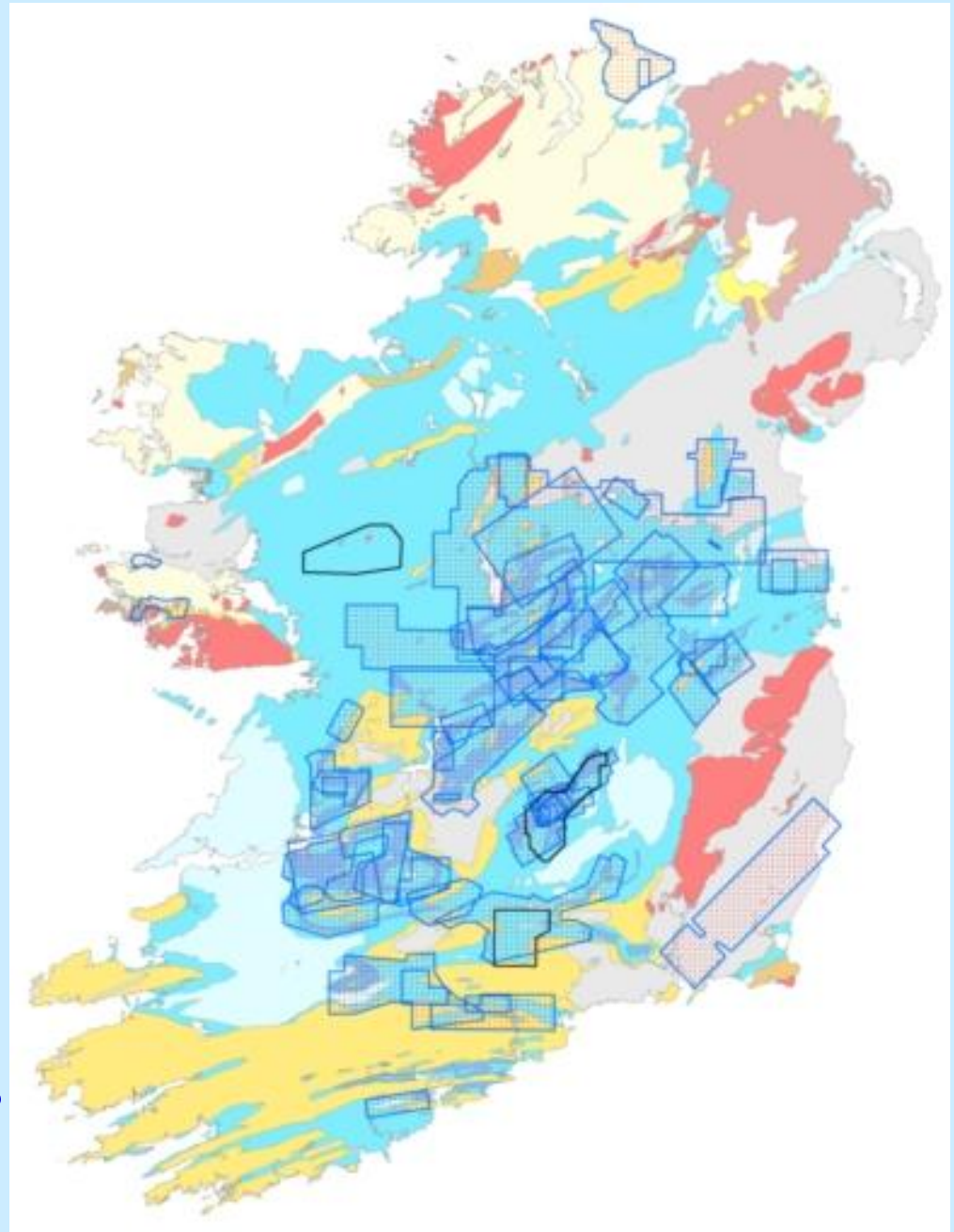


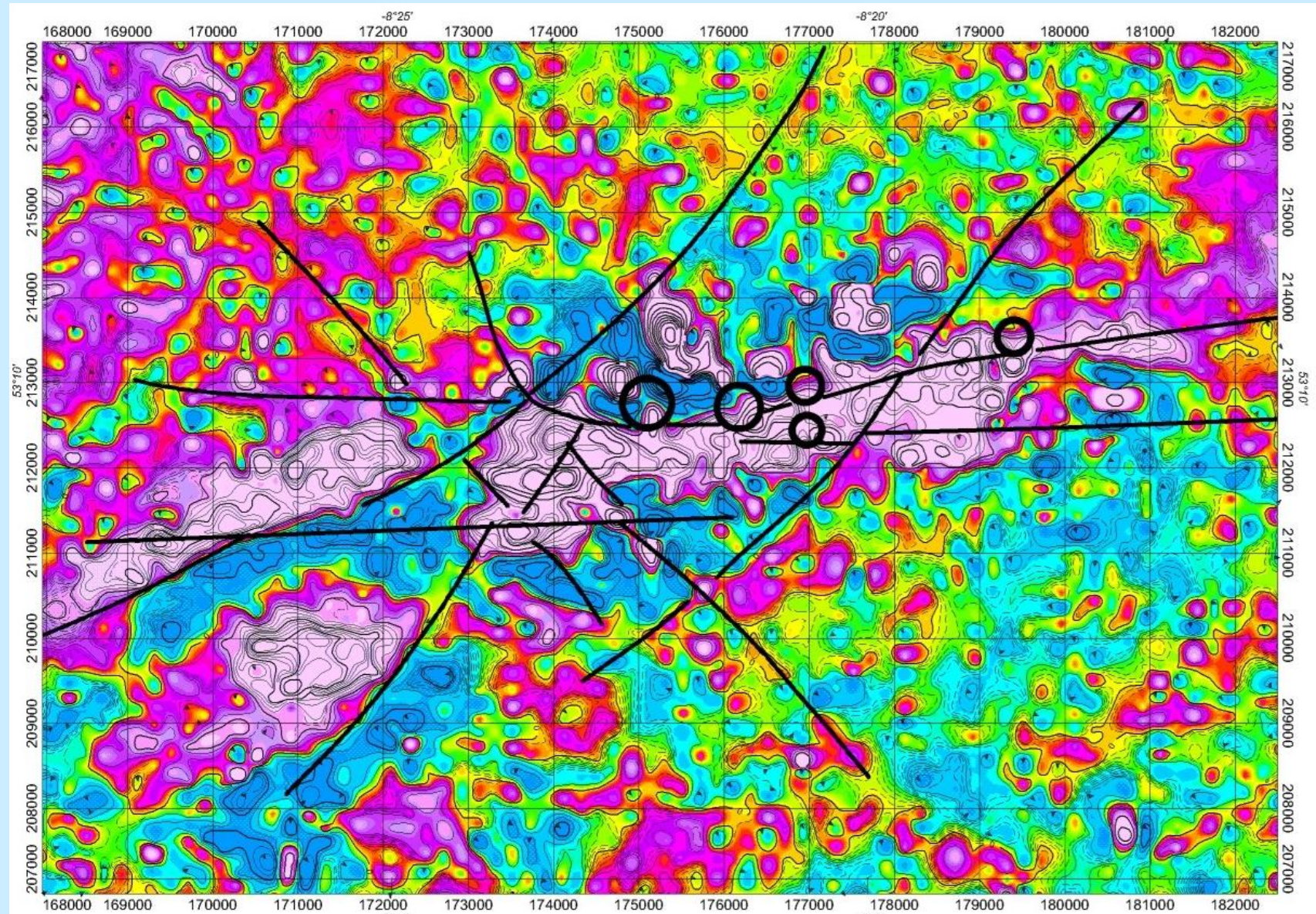
EMD's Publicly Available Digital Datasets (2)

1. Exploration Company Reports & Administrative Data on P.L. Areas
- 2. Airborne Geophysical Data**
3. Web Mapping Services
4. Geological Survey of Ireland website

Available Airborne Geophysical Data

- Approx. 40 surveys since 1985
- Majority of surveys over Lower Carboniferous
- Most common surveys are magnetics and EM
- Must lodge all raw, processed and interpreted data with EMD (ASCII and Geosoft .gdb & .grd formats)
- Held confidential for 4 years after lodgement date
- Available on CD





Enhanced magnetic image with structural lineaments at
Tynagh

(Navan Resources Plc)



EMD's Publicly Available Digital Datasets (3)

1. Exploration Company Reports & Administrative Data on P.L. Areas
2. Airborne Geophysical Data
- 3. Web Mapping Services**
4. Geological Survey of Ireland website



Access to EMD Web Mapping Services

- **Can be accessed via the spatial data pages of the DCENR website at**
<http://www.dcenr.gov.ie/Spatial+Data/Exploration+and+Mining>
- **Also accessible from the mineralsireland.ie website at**
<http://www.mineralsireland.ie/Online+Services>

EMD Map Viewer

- **GIS functionality**
 - Advanced tools (e.g. select, extract, annotate, measure & print tools)
 - **Exploration**
 - Borehole data including logs
 - Mineral deposit occurrences
 - Geology maps
 - Airborne geophysics survey areas
 - **Mining**
 - Current and expired State Mining Facilities
 - Historic mines
 - Shafts and adits (to be updated)
 - **Environmental Information**
 - National Parks
 - NPWS Data (SAC, SPA and NHAs)
 - National/Historic Monuments



More...

Streets

Aerial

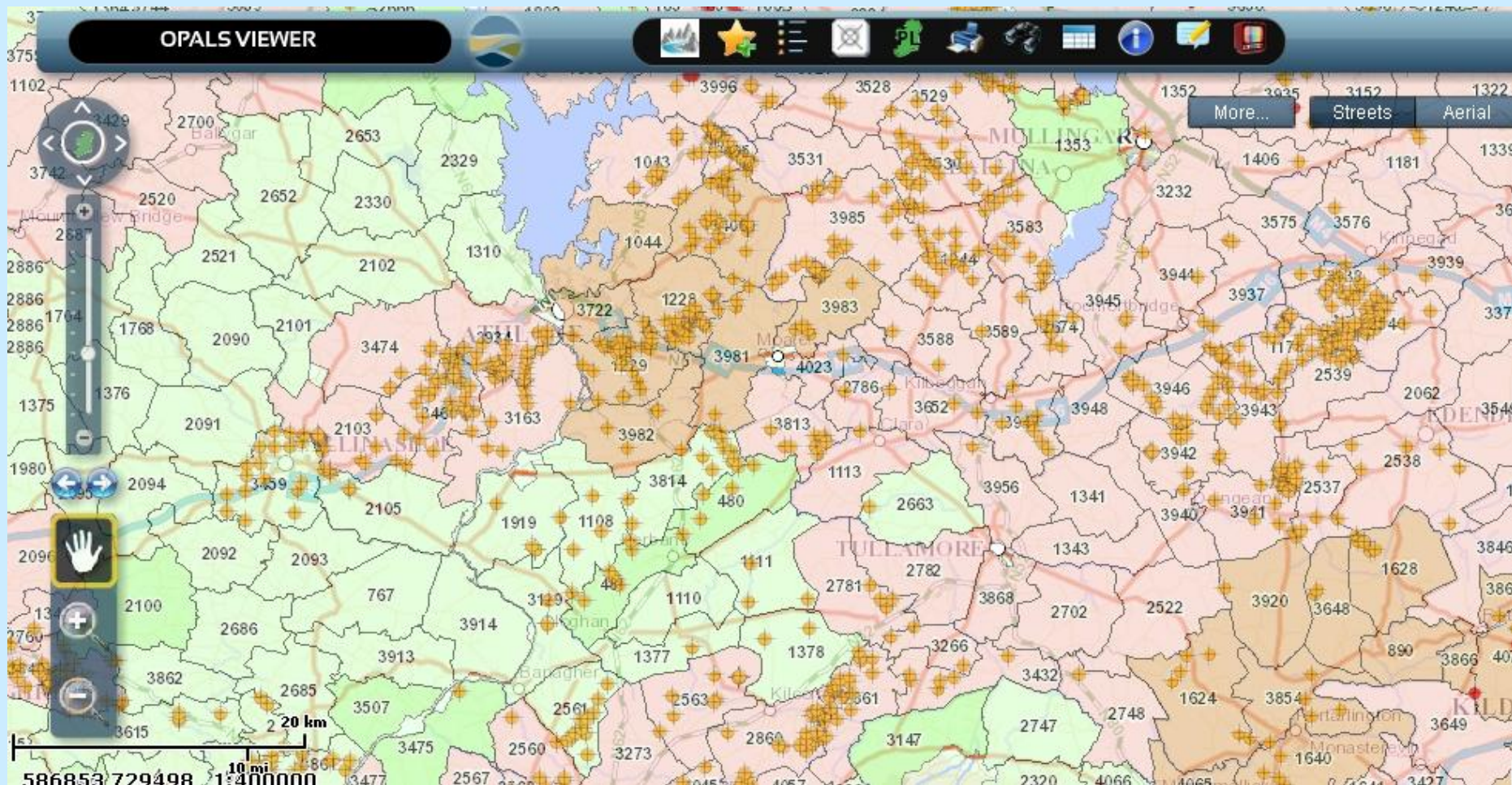


100 km

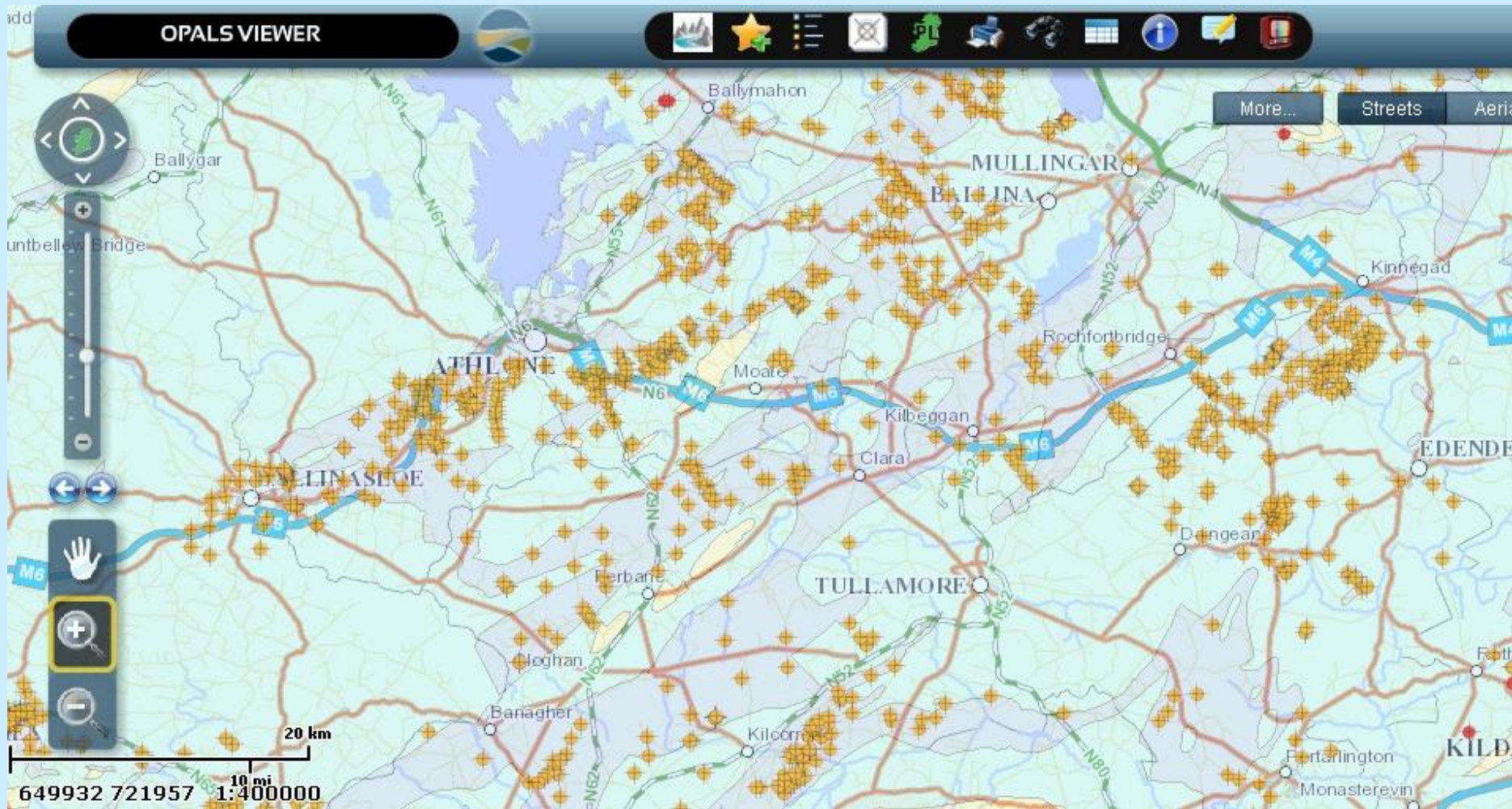
50 mi

455724 524516 1:2500000

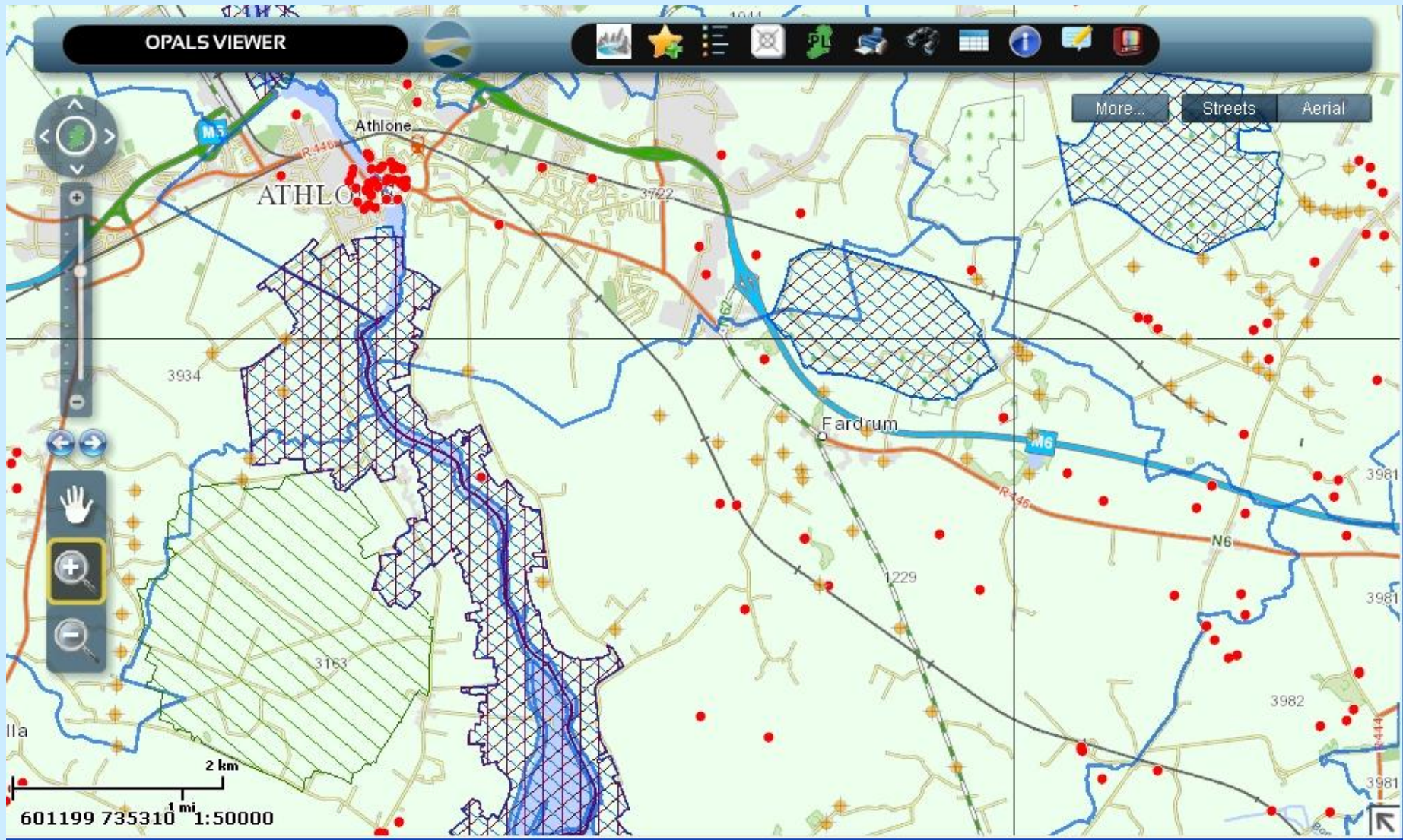
PL Areas and drillhole information, OSi map backdrop



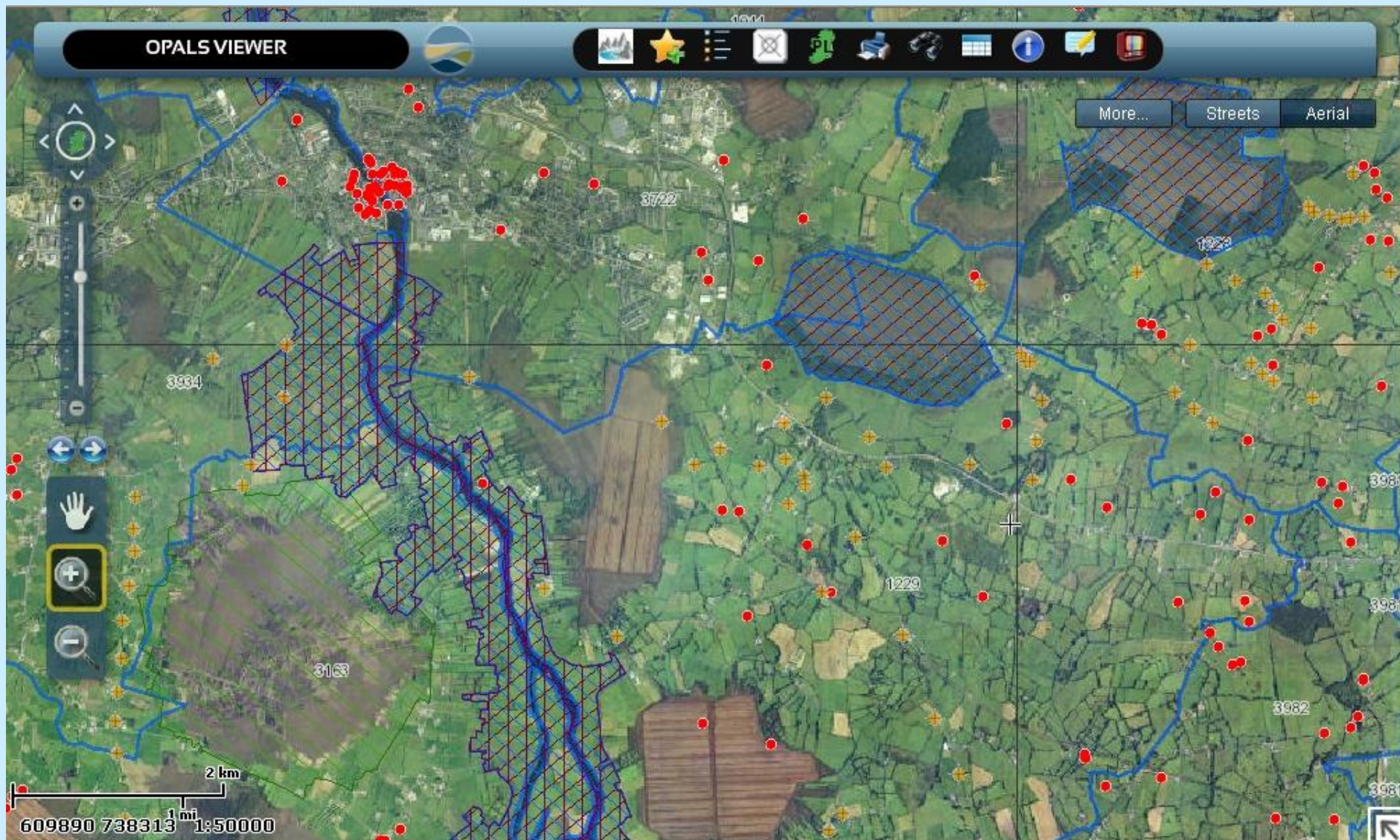
Drillholes on geological backdrop



Environmental Information on OSi base maps



Environmental Information on Aerial Photos



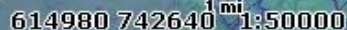
Attribute Information on Drillholes

The screenshot displays the OPALS VIEWER application. On the left is a map view with a grid overlay and navigation controls. The main panel on the right is titled 'Drillhole Details' and shows information for Drillhole 92-1229-23. The details include:

- DrillHole ID: 255803815
- DrillHole Name: 92-1229-23
- Drillhole Type: DDH
- Reporting Agency: Westland Exploration Ltd.
- Author:
- Drilling Company:
- File Reference: PR58_02
- Year: 1992
- Create Date: 01-APR-92
- Comment: DRILLHOLE 92-1229-23 GEOMETRY: Multipoint DRILLHOLEID: 255803815 PUBIND: Y DRILLHOLENAME: 92-1229-23 OBJECTID: 18049

The interface also features a toolbar at the top with various icons and a bottom status bar showing coordinates (614980 742640) and a scale of 1:50000.

PAGE 7 OF 8

C84

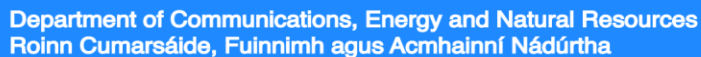
3D Rendering Tools



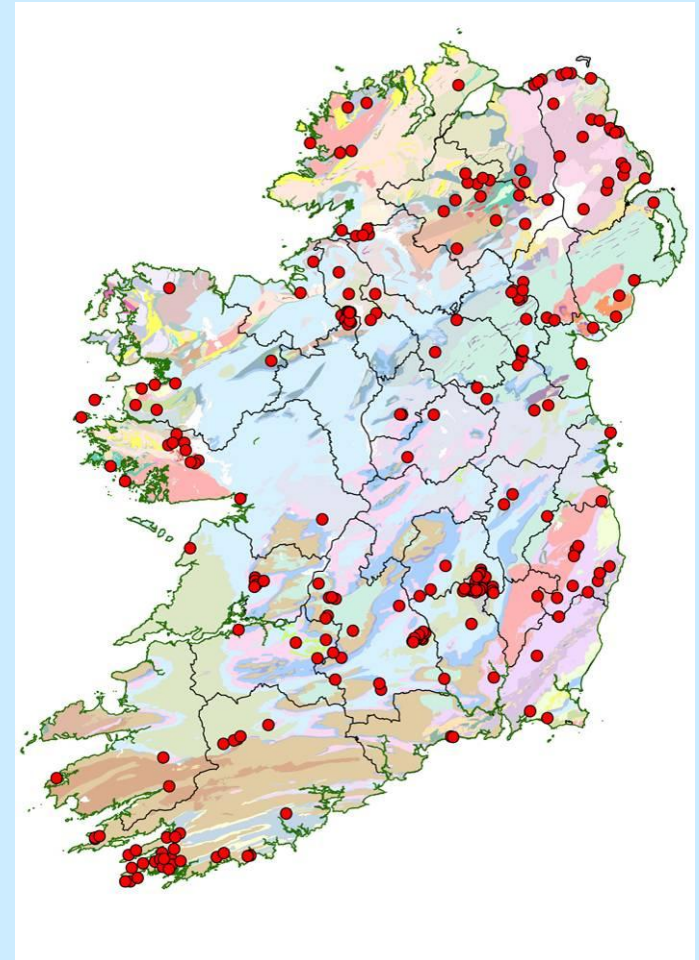
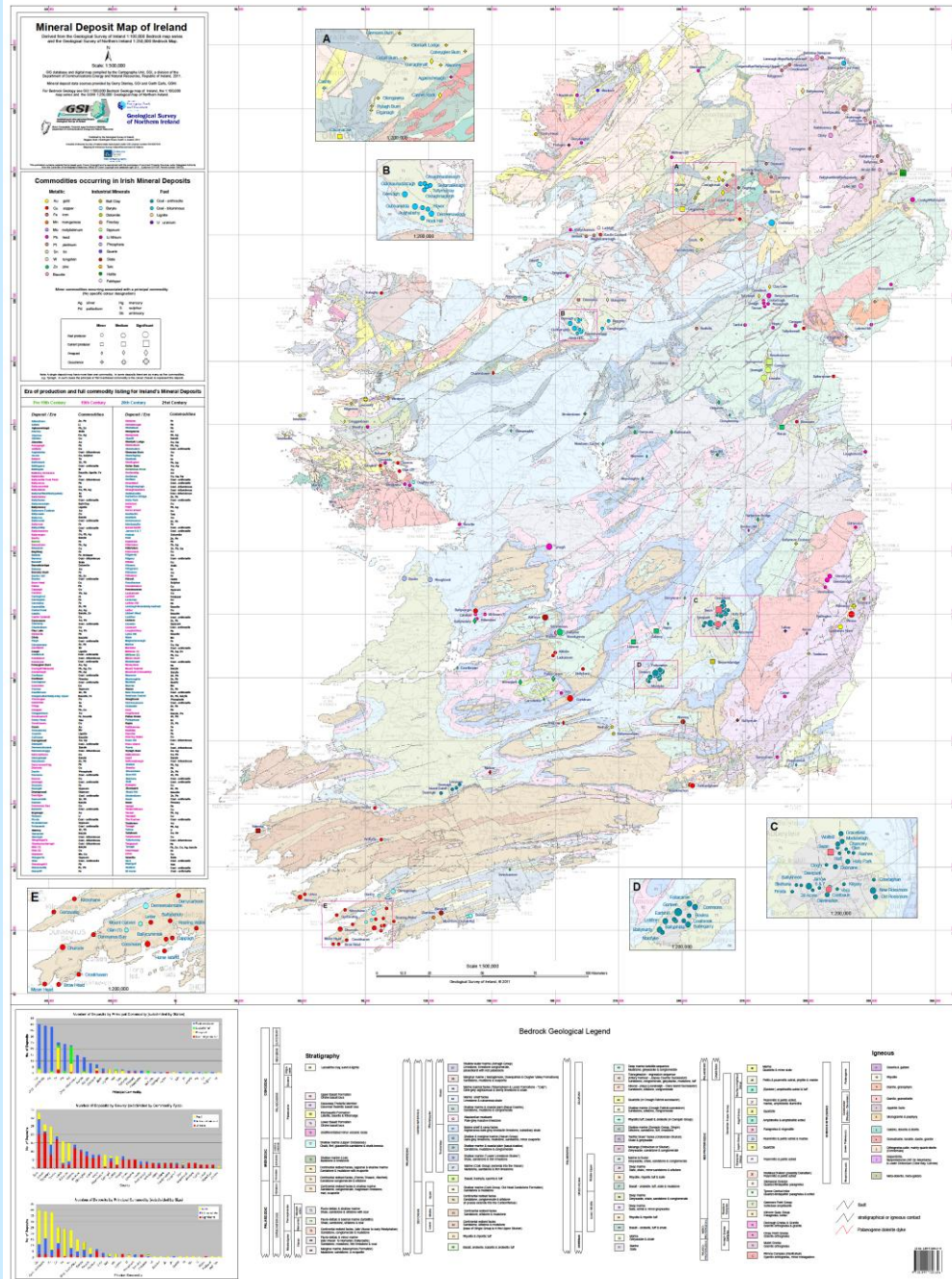


GSI's Publicly Available Digital Datasets (4)

1. Exploration Company Reports & Administrative Data on P.L. Areas
2. Airborne Geophysical Data
3. Web Mapping Services
4. Geological Survey of Ireland website

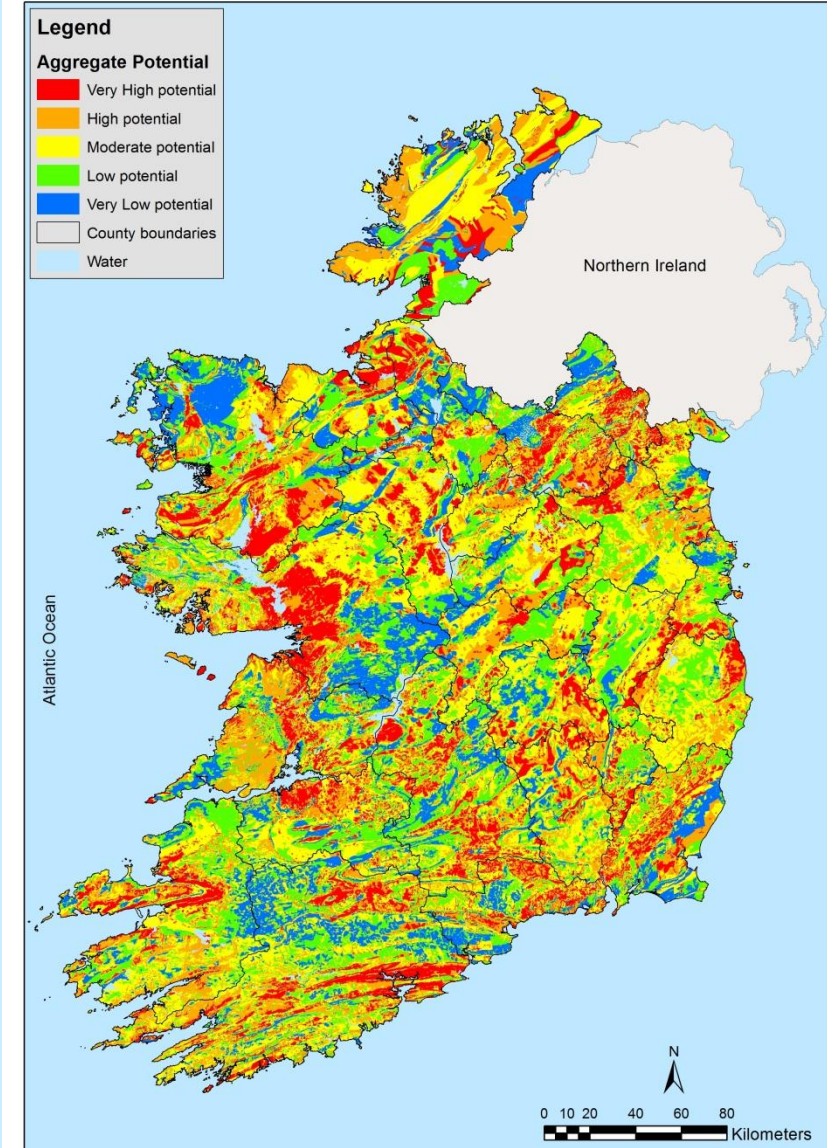
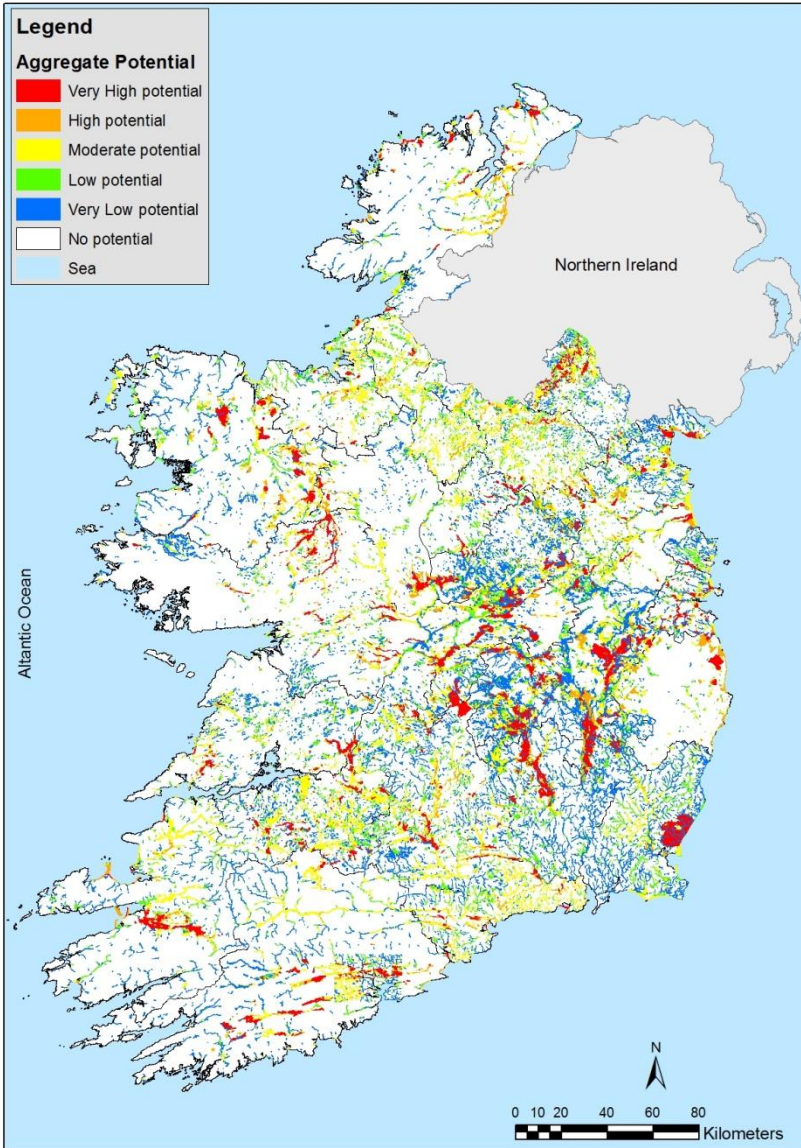


Irish Mineral Deposits





Aggregate Potential Mapping





Home

Contrast: High | Normal Text Size: A A A

TELLUS BORDER

- ▶ Tellus Border Home
- ▶ Library
- ▶ Aims and Benefits
- ▶ Communications
- ▶ Tellus Border Viewer
- ▶ News
- ▶ Tellus Border TV
- ▶ Frequently Asked Questions
- ▶ Data Downloads
- ▶ Events
- ▶ Research
- ▶ Geochemical Survey
- ▶ Geophysical Survey
- ▶ Contact

Geochemical Data Gold (Au) in Stream Sediments

Count: 3008
Median: 2.05
Mean: 1.54
Minimum: <1
Maximum: 95

Ordnance Survey Ireland Licence No. EN 0047213 © Ordnance Survey Ireland/Government of Ireland

Tellus Border project partners are pleased to announce the publication of the outputs of the Tellus Border project, which were revealed at a conference on 24th October 2013 at the Hillgrove Hotel, Co. Monaghan. New data for over 50 elements in the environment, including gold in stream sediments, is available to view on our interactive viewer [here](#). View the [gold map](#) and [gold information sheet](#). Read a full report on the conference [here](#).

Tellus Border is an EU INTERREG IVA-funded regional mapping project collecting geo-environmental data on soils, water and rocks across six border counties - Donegal, Sligo, Leitrim, Cavan, Monaghan and Louth - and continuing the analysis of existing data in Northern Ireland. The project is a cross-border initiative between the Geological Survey of Northern Ireland, the Geological Survey of Ireland, Queen's University Belfast and Dundalk Institute of Technology.

Information from the project will assist environmental management and support sustainable development of our natural resources in the border region. The project is a follow-on from the Tellus project successfully completed in Northern Ireland.

Tellus Border is funded by the INTERREG IVA programme of the European Regional Development Fund, which is managed by the Special EU Programmes Body (www.seupb.eu). The project is additionally part-funded by the Department of Environment, Community and Local Government.



Want more information?

Contact:

Eibhlin.doyle@dcenr.gov.ie

Wayne.cox@dcenr.gov.ie

Gerry.Stanley@gsi.ie

Or visit:

www.mineralsireland.ie

www.dcenr.gov.ie/Spatial+Data/

www.gsi.ie